

# PROJECT BRIEF & SDG COMPLIANCE



THE MANAGING  
COMPANY

THE PROJECT

# PROJECT BRIEF

Rimba Raya, located in Central Kalimantan in Indonesian Borneo, is the world's largest initiative to protect and preserve High Conservation Value (HCV), tropical lowland peat swamp forests - one of the most highly endangered ecosystems in the world.

## THE PROJECT

### Rimba Raya Biodiversity Reserve

Rimba Raya is rich in biodiversity, including several flagship species such as the endangered Bornean Orangutan, Clouded Leopard, Gibbon, Proboscis Monkey, and Asian Sun Bear.

The project forms a critical buffer zone along the Eastern border of the Tanjung Puting National Park in the Seruyan River watershed.



The Rimba Raya Biodiversity Reserve aims to reduce Indonesia's greenhouse gas emissions and protect the endangered Bornean Orangutan, and other RED listed species, by preserving 64,977 hectares of tropical peat swamp forest.

## THE COMPANY

### InfiniteEARTH

Economic incentives for preservation of the tropical peatland forests are created by InfiniteEARTH- using the sale of carbon credits that are generated by the Verified Carbon Standard (VCS).

Carbon credits are validated through the Reducing Emissions from Deforestation and Degradation (REDD) and Avoided Planned Deforestation (APD) frameworks.

The sustainable revenue stream from carbon credit sales supports local community development, provincial government infrastructure, and project area protection. Community involvement is enhanced through the development of programs to improve quality of life, such as water filtration systems, increased access to healthcare, scholarships and clean energy.

## RIMBA RAYA IS HOME TO:

01

300 species of birds

02

122 species of mammals

03

180 species of trees  
and plants



# PROJECT GOAL



The overall goal of the project is to demonstrate that the protection of endangered peat swamps is advantageous to project stakeholders, commercial institutions, social programs, and environmental objectives.

Project revenues have been able to fund rehabilitation programs, environmental education programs, as well as the Orangutan Foundation International. In addition, the project supports education, provides access to health care, clean energy, food security, capacity building and provides income opportunities through employment and the development of micro-enterprises.

# PROJECT HISTORY

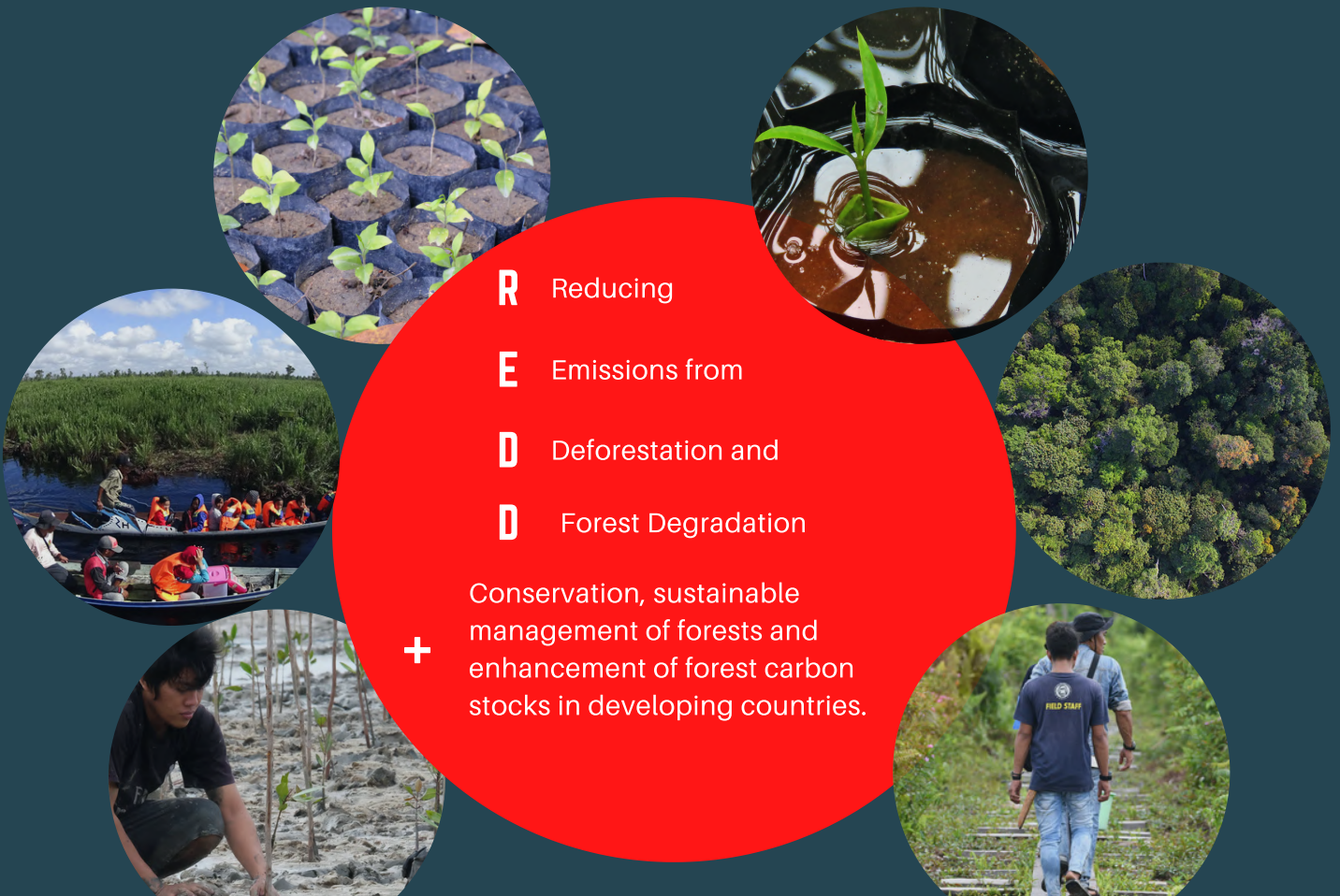
In 2007, the Project Area was under imminent threat of planned deforestation; the area was gazetted by the provincial government to be converted into four oil palm estates. This area has now officially been re-designated as a Conservation Forest.

The Rimba Raya Biodiversity Reserve Project is the largest-ever REDD project to see its emission reductions verified under the Verified Carbon Standard, reducing greenhouse gas emissions by an average of 4.5 million tonnes per year and having already verified over 15 million tonnes to date. The project is scheduled to reduce more than 130 million over the 30-year project lifespan.

# WHAT DOES REDD+ MEAN?

**R** Reducing  
**E** Emissions from  
**D** Deforestation and  
**D** Forest Degradation

**+** Conservation, sustainable management of forests and enhancement of forest carbon stocks in developing countries.







**Limba Raya**  
BIODIVERSITY RESERVE

An InfiniteEARTH Project

# PROJECT FACTS



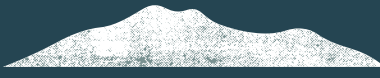
**130m tonnes**

of avoided carbon emissions



**85,000**

Mangroves planted



**64,977**  
hectares

Located in Central Kalimantan, Indonesian Borneo

**10800**

People in and around the project area

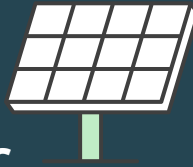


**400,000**  
trees planted



**Economic incentives**

Carbon credit income supports local stakeholders



**2500**  
homes given solar power



**Health Services**

Floating clinic can access most remote areas



**\$150,000**  
Scholarship Fund

**2 x Libraries**  
Promotes literacy



**2 Orangutan Release Camps**



World's largest privately funded orangutan reserve protecting Bornean orangutans and other endangered species



**Micro-financing ZUPER & Chicken Farm Initiatives** allow women to make an economic contribution

**A focus on job creation**



**100%**  
of all households receive water filters

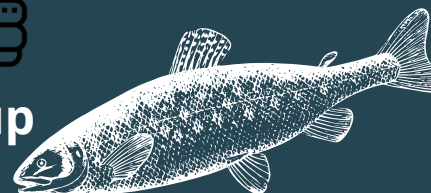
**Three**  
Water Purifying Systems



**Garbage management**



**River Clean-up Initiatives**



# VERIFIED SDGS



The Rimba Raya Biodiversity Reserve continues to work towards the sustainable development of the project area while ensuring that initiatives introduced are in line with all 17 of the United Nations SDGs. In these efforts, we seek opportunities that allow us to develop effective stakeholder engagement and where we – together with our partners and clients – can effectively contribute to this global development agenda.

2020 will be remembered as a year filled with big events, but the most notable (for us) was that Rimba Raya became the first REDD+ project in the world to be verified for UN Sustainable Development Goal (SDG) compliance under the VERRA Sustainable Development Verified Impact Standard (SD VISA Standard) - achieving the highest possible rating of contributing to all 17 UN SDGs.

## HOW WE MEET ALL 17 OF THE UN SUSTAINABLE DEVELOPMENT GOALS



SDG	GOAL	Project Activities that directly contribute to this SDG
1	No Poverty	Employment, Micro enterprises, Solar Power & Solar Lanterns
2	Zero Hunger	Chicken Farms & Zuper Shrimp Paste
3	Good health & well being	Floating Clinic; Reading Glasses
4	Quality Education	Trainings; Scholarships; Community Centers & Village Libraries; Mangrove Reforestation
5	Gender Equality	RRC employment; Chickens Farm & Zuper Shrimp Paste
6	Clean Water and Sanitation	Water filters and Water Filtration systems
7	Affordable and Clean Energy	Solar Power & Solar Lanterns
8	Decent Work and Economic Growth	Chickens Farm & Zuper Shrimp Paste; Tree nurseries; Community Centers & Village Libraries
9	Industry, Innovation & Infrastructure	Solar power; Micro-Credit; Chickens Farm & Zuper Shrimp Paste; Community Centers
10	Reducing Inequality	Solar Power & Solar Lanterns; Water filters
11	Sustainable Cities and Communities	Support for Tanjung Puting National; Orangutan Care Facility
12	Responsible Consumption and Production	School Curriculum: Climate Change/Sustainability
13	Climate Action	Mangrove Reforestation & Peat Swamp Reforestation; Establishment and Protection of the Rimba Raya Reserve; Community Firefighting; Trainings; School Curriculum: Climate Change/Sustainability; Tree nurseries
14	Life Below Water	Seruyan River Cleanup; Mangrove Reforestation
15	Life On Land	Mangrove Reforestation & Peat Swamp Reforestation; Tree nurseries; Establishment and Protection of the Rimba Raya
16	Peace, Justice, & Strong Institutions	Community Centers; Solar power
17	Partnerships for the Goals	Development Donations





# ECONOMIC INCENTIVES



Micro-financing initiatives support the community and help develop economic stability. The Zuper Shrimp Paste, Chicken Farms & Fish Farms micro-enterprises address several SDG's while solar lanterns and solar panels contribute to a better quality of life for community members

**1** NO POVERTY

**5** GENDER EQUALITY

**7** AFFORDABLE AND CLEAN ENERGY

**2** ZERO HUNGER



**9** INDUSTRY, INNOVATION AND INFRASTRUCTURE

**10** REDUCED INEQUALITIES



**16** PEACE, JUSTICE AND STRONG INSTITUTIONS



# IMPROVING QUALITY OF LIFE



We provide scholarships to high achieving children from low income families and through our Educational Fund, all children receive benefits such as books, stationary, school bags and funding for use in school related activities. Currently we have 2 libraries which provide a learning space for all community members and help develop literacy in the community. Community Centres provide a neutral space where meetings and educational programs can be held.

Several Seruyan River clean-up programs have been conducted. These serve as a means to educate all stakeholders on collective and individual responsibility to keep the environment clean and that in doing so, water quality will improve which will positively impact their quality of life.



**8** DECENT WORK AND ECONOMIC GROWTH



**4** QUALITY EDUCATION



**12** RESPONSIBLE CONSUMPTION AND PRODUCTION



**14** LIFE BELOW WATER





# HEALTH & WELL-BEING



The Floating Clinic allows us access to people in the most remote villages, benefiting those with limited resources and mobility. Our Outreach medical services, are particularly beneficial to women, children and the elderly who would otherwise not receive necessary health support.

For a community that resides on the banks of the Seruyan River and use it for everything from fishing to drinking to bathing, it was vital to ensure the availability of clean water.

By providing water filters to every house and installing 3 large water filtration systems, we help to ensure the health and well-being of our community.





# PROTECTING ENDANGERED SPECIES



InfiniteEARTH and the Rimba Raya Biodiversity Reserve work closely to protect and preserve Bornean Orangutans, an iconic and endangered species, through the ongoing financial support of Orangutan Foundation International - funding made possible by the sale of InfiniteEARTH carbon credits and environmental offsets.



Habitat loss is the primary cause of species extinction. Orangutans are particularly vulnerable. As an arboreal species, they rely on a vast network of forest canopy in order to search for jungle fruit. Many are now isolated on fragmented island forests surrounded by a sea of palm oil. Many will starve to death while fruiting trees lie just beyond their reach. InfiniteEARTH only receives carbon credits from part of the 64,000 hectares (158,150 acres) that constitutes the Rimba Raya Biodiversity Reserve. A large portion of the reserve lies outside the official "carbon accounting area", which means we subsidize the conservation of that additional area. Your purchase of InfiniteEARTH Biodiversity Offsets ensures that this iconic species has a safe habitat into which some three hundred wild born orphaned orangutans at the Orangutan Foundation International Care Center can eventually be released back into the wild.



“The Bornean orangutan (*Pongo pygmaeus*) is now critically endangered, with populations in sharp decline due to habitat destruction and illegal hunting



# PARTNERSHIPS



The Project collaborates with all levels of government and has developed strong partnerships with The Tanjung Puting National Park and Orangutan Foundation International (OFI). We work cohesively in protecting the peat swamp and surrounding forests from fires and other threats.

Our support of OFI includes an orangutan release site within the project area where rehabilitated, wild-born orangutans are released deep in the forest to ensure no human contact and continued survival of this threatened species.

Tree & mangrove planting in our reforestation efforts and restoration of degraded areas are vital initiatives that ensures the continued protection of this fragile habitat.

Working together with community members, government and other relevant stakeholders will help us protect this area for future generations.



# CERTIFICATION



InfiniteEARTH's Rimba Raya Biodiversity Reserve was the first forest carbon project in the world to receive triple-gold validation under the Climate Community and Biodiversity Standard (CCB), by demonstrating exceptionalism in three distinct areas: In fact, we set the standard for REDD+ by developing the industry's first independently certified forest carbon accounting methodology and then delivered the world's first independently validated REDD+ project under the Voluntary Carbon Standard.

## REDD+



The SDVISTA SDG verification sets a new bar for ESG investing. Companies wishing to invest in projects that offer investment opportunities with a high bar of Environmental & Social Governance (ESG), will find this verification gives them an opportunity to make responsible investments in a well-managed project that contributes to the well-being of all stakeholders and has a continuing focus on other global issues such as climate action, reduced deforestation, community development and stakeholder well-being.



VCS Verified- The VCS Standard lays out the rules and requirements which all projects must follow in order to be certified. \* Verra.org

CCB Triple Gold Verified- The Climate, Community & Biodiversity (CCB) Standards identify projects that simultaneously address climate change, support local communities and smallholders, and conserve biodiversity. \*Verra.org



SDVISTA Verified Impact Standard - The Sustainable Development Verified Impact Standard (SD VISTA) is a flexible framework for assessing and reporting on the sustainable development benefits of project-based activities, helping unlock new sources of finance to support and scale up high-impact efforts. \* Verra.org